



## CSPCA 2023 National Specialty Show September 10-15, 2023

Sheraton Lisle – Naperville  
3000 Warrenville Road; Lisle, IL 60532  
630-505-1000  
[www.sheratonlisle.com](http://www.sheratonlisle.com)

**Reservations MUST be made at this link:**

<https://www.marriott.com/event-reservations/reservation-link.mi?id=1684853047367&key=GRP&app=resvlink>

Lisle is a suburb of Chicago- 19 miles from O'Hare Airport & 28 miles from Midway Airport

**Room Rates:** \$99.00 + tax for Double and King

Discount room rate are good through August 11, 2023

Sept. 10- Sunday- Move in and Puppy Match

Sept. 11- Monday- Berkshire Spur Specialty Show

Sept. 12- Tuesday- Futurity-Maturity; Top 25 Invitational

Sept. 13- Wednesday- Sweepstakes; Obedience/Rally; Awards Dinner

Sept. 14- Thursday- Dogs & Bitches; Stud Dog & Brood Bitch; Judges Education  
General Meeting

Sept. 15- Friday- Juniors, Veterans, Best of Breed, NOHS, Best Bred-By, Best Veteran,  
Brace Class, Judges Education

Judges- (**Pending AKC approval**)

Berkshire Spur Specialty Show- - Jeffery M. Bazell # 5777

Futurity/Maturity: Wanda Spediacci # 5670

Sweepstakes: Jill Parslow

Dogs & Bitches: Blai Llobet Cervilla #111533

Best of Breed: Connie Gard # 76654

Rally/Obedience: Loretta Lazzara # 90526

**Nationals Show Chairman:** Don Gillett - [dgill1122@aol.com](mailto:dgill1122@aol.com)

**Assistant Chairman-** Mike Hardy [mdjhardy@gmail.com](mailto:mdjhardy@gmail.com)

**Obedience Chairman-** Anne Baker [annebaker55@comcast.net](mailto:annebaker55@comcast.net)

**Show Secretary:**

Sue Scott; Champion Dog Events: [Chdogevents@aol.com](mailto:Chdogevents@aol.com) [www.championdogevents.com](http://www.championdogevents.com)

**Hotel Liaison for CSPCA:** Deanna Liskey- [rdliskey@yahoo.com](mailto:rdliskey@yahoo.com)

**Please keep checking our website for the most up-to-date information about Nationals.**



## AIRPORT INFORMATION

There are 2 hotels that you can fly into in the Chicago area. Both offer rental cars and have shuttle services.

**[Chicago O'Hare International Airport \(ORD\)](https://www.flychicago.com/ohare/home/Pages/default.aspx)** 10000 West O'Hare Ave, Chicago, IL 60666.

<https://www.flychicago.com/ohare/home/Pages/default.aspx> This airport is about 19 miles from the show sight.

**[Chicago Midway International Airport \(MDW\)](https://www.flychicago.com/midway/home/Pages/default.aspx)** 5700 S Cicero Ave, Chicago, IL 60638

<https://www.flychicago.com/midway/home/Pages/default.aspx> This airport is about 28 miles from the show site.

Several transportation choices are available from both airports to the show site. There is bus, train, cab, shuttle uber, car rental and limo services that can get you to the show site from either airport.

Bus estimated price- \$4-\$10

Train estimated price (Metra)- \$10 Day Pass

Cab estimated price- \$65-\$80

Shuttle estimated price- \$50-\$75

Uber estimated price- \$135 + tolls, airport tax etc.

Limo estimated price- \$135 from either airport (tolls, taxes etc should be included)

American Limo Naperville- 888-876-2154

Lisle Taxi Dispatch- 630-999-8294

Naperville Luxury Limousine- 312-809-8877



## AWARDS BANQUET



This is a dinner affair. After dinner, all the awards will be presented. These awards are to recognize the highest achieving dogs and people in our dog club. It is an excellent opportunity for you to put names with faces and to see what our members have accomplished. Our Junior Showmen work this banquet by helping to set up and distributing the awards. Information on how to order tickets will be included in the premium and posting here as soon as the information is available.

## CATALOGS



Catalogs should be purchased in advance. A limited supply will be available at Nationals. If you pre-purchase a catalog, you can pick it up at the registration table along with a complimentary exhibitor's bag. Preordering will guarantee that you get a catalog. Catalogs prices will be listed in the premium. You will also have the option to purchase a Marked Catalog. This catalog will be mailed After the show with all the winners marked in the catalog. No marked catalogs will be available after the show. Preorder your catalogs on the Reservation Form



## CAMP GROUNDS

The closest camp grounds to the show sight is the Blackwell Family Campground. The address is

3S580 Naperville Rd  
Wheaton, IL 60189

<https://campgrounds.rvlife.com/regions/illinois/wheaton/blackwell-family-campground-13374>



## GENERAL MEMBERSHIP MEETING

The Chinese Shar-Pei Club of America General Membership Meeting will be held on Thursday afternoon, September 14th. It is important for all members attend to meet the Board and learn about the activities and actions of your Parent Club. Time of the meeting will be posted at Nationals.

## HOTEL INFORMATION

Room reservations in our block with discounted rates are now open. Be sure to mention that you are coming to the Shar-Pei Nationals so you get the discounted group rate.

Please contact Deanna Liskey if you have any problem with your reservation. She is our hotel liaison. Be sure to sign your email so there is no confusion as to who needs help. You can contact Deanna at [rdliskey@yahoo.com](mailto:rdliskey@yahoo.com).



If you book a suite please let Deanna know so that she can see that we get credit for the booked nights.

If you should need to call the hotel during Nationals the phone number is: 630-505-1000.

[Reservations MUST be made at this link:  
https://www.marriott.com/event-reservations/reservation-link.mi?id=1684853047367&key=GRP&app=resvlink](https://www.marriott.com/event-reservations/reservation-link.mi?id=1684853047367&key=GRP&app=resvlink)

If you have reservations and find out that you cannot come, please call and cancel your reservation so that your rooms can be rebooked. If you book a suite let Deanna know as we get the room credit for it.

The hotel is close to restaurants, grocery and drug stores. There is a large outlet mall not far away.

**Deadline for the discounted group rate is August 11. After that date, if there are any rooms left, the price will go to the normal room rate.**

~~~~~

## JUDGES EDUCATION PROGRAM

The Judges Education Seminar will start on Thursday, September AT 11:30 AM with a seminar, ringside mentoring and a hands-on examination of Chinese Shar-Pei dogs. The following day, Friday, September 15 it will continue with ringside mentoring during Best of Breed judging. Watch our website for more information as it becomes available.

When you make your hotel reservations, be sure to mention that you are coming to the Chinese Shar-Pei Club of America Show so you can take advantage of a discounted hotel room rate, if possible. Deadline for the discounted room rate is August 11, 2023.

You can find all the information about the Judges Education Seminar at this link when it becomes available. It will also be posted on this page:

[http://www.cspca.com/Education/upcoming\\_seminars.asp](http://www.cspca.com/Education/upcoming_seminars.asp)

~~~~~

## ATTENTION ALL JUNIOR SHOWMEN

We love our Juniors and welcome them to our National Specialty Show. We have plans for a handler clinic, pizza party as well as other activities. After Junior Showmanship classes are over on Friday, Sept 15, please stay around for a Juniors group photo by the photographer.

**New this Year:** If you are a Junior and this is your last year to qualify as a Junior at the CSPCA National Specialty Shows, we want to recognize your final year as a Junior at our Nationals. Immediately after Junior Showmanship is over, we would like all Juniors aging out of Juniors to take a final lap around the ring in a Juniors Farewell Parade. It is our final recognition of your Junior's journey. There is no cost to enter the Parade but you

must send in the entry form and be entered in a Regular Juniors Class. You can find the entry form in the Premium and also on our website under “Shows”, “Nationals” and then “Junior’s Farewell Parade”.



## PHOTOGRAPHER

Teddy Lei  
8727 Argyle Ave, St Louis, MO 6311  
626-747-2241  
<https://teddylei.shootproof.com/>



## PLAYING CARDS



We are selling custom designed playing cards. They will be available for sale at Nationals for \$25 per deck. The outside of the deck has the Nationals logo on it but each suit card has a different Shar-Pei. It is a fun deck of cards which you will enjoy using year after year. You can preorder them on the Reservation form.



## RAFFLE/ AUCTION



We will be holding The Beverly Thornton-Wall Silent Auction & Raffle again this year. We need your help to make this a successful raffle. State Baskets are highly anticipated. Team up with your friends and create a basket to represent your state. Distinctly Shar-Pei items, always draw bids and coveted raffle tickets. Great doggie necessities and not so necessary, fun, useful and cute items are much loved, as well. (leashes, crates, treats, toys, beds, etc.) Human treasures are always welcome: cute T-Shirts, Sweatshirts, new and

gently used Pei Shirts of all types, fun accessories, art, food, wine and the ever popular jewelry. Your special Silent Auction items are also needed!

All money raised benefit our dogs through the Charitable Trust funding medical research. Our Rescues saves homeless Pei every day. Juniors; we need to encourage our kids, to keep our breed strong. Veterans; Our history is in their genes!!

Jeanne Hill-Jurik, the raffle chair the raffle has asked to let her know if you are sending or bringing a donation for the raffle/auction [rubypaws1@yahoo.com](mailto:rubypaws1@yahoo.com) phone: 303-913-7054



## **RESERVED SEATING**

Reserved Seating is available at a cost of \$40.00. This is valid Monday through Friday. Designate quantity on reservation/order form included in this premium. Reserved seating is in a roped off area and guarantees you a seat but not a particular seat in that area.



## **TRANSPORTATION & SHUTTLE INFORMATION**

These shuttle services provide transportation from the airports to the hotel. Contact them directly for more information.

Western Suburban Limo  
630.668.9600  
[www.westsublimo.com](http://www.westsublimo.com)

A-1 Airport Limo  
630.833.3788  
[www.Allimousine.com](http://www.Allimousine.com)

Naperville Luxury Limo  
312.809.8877  
[www.napervilleluxurylimousine.com](http://www.napervilleluxurylimousine.com)

The Metra and Amtrak trains run from Naperville to downtown Chicago Union Station on a regular schedule. The Naperville train station is not far from the hotel, just a short 3 miles. The train to Chicago can take between 40 minutes to an hour. Fliers about this service and the train schedules should be available in the hotel lobby. If you drive to the train station, there is an additional charge for parking.

## WELCOME PARTY

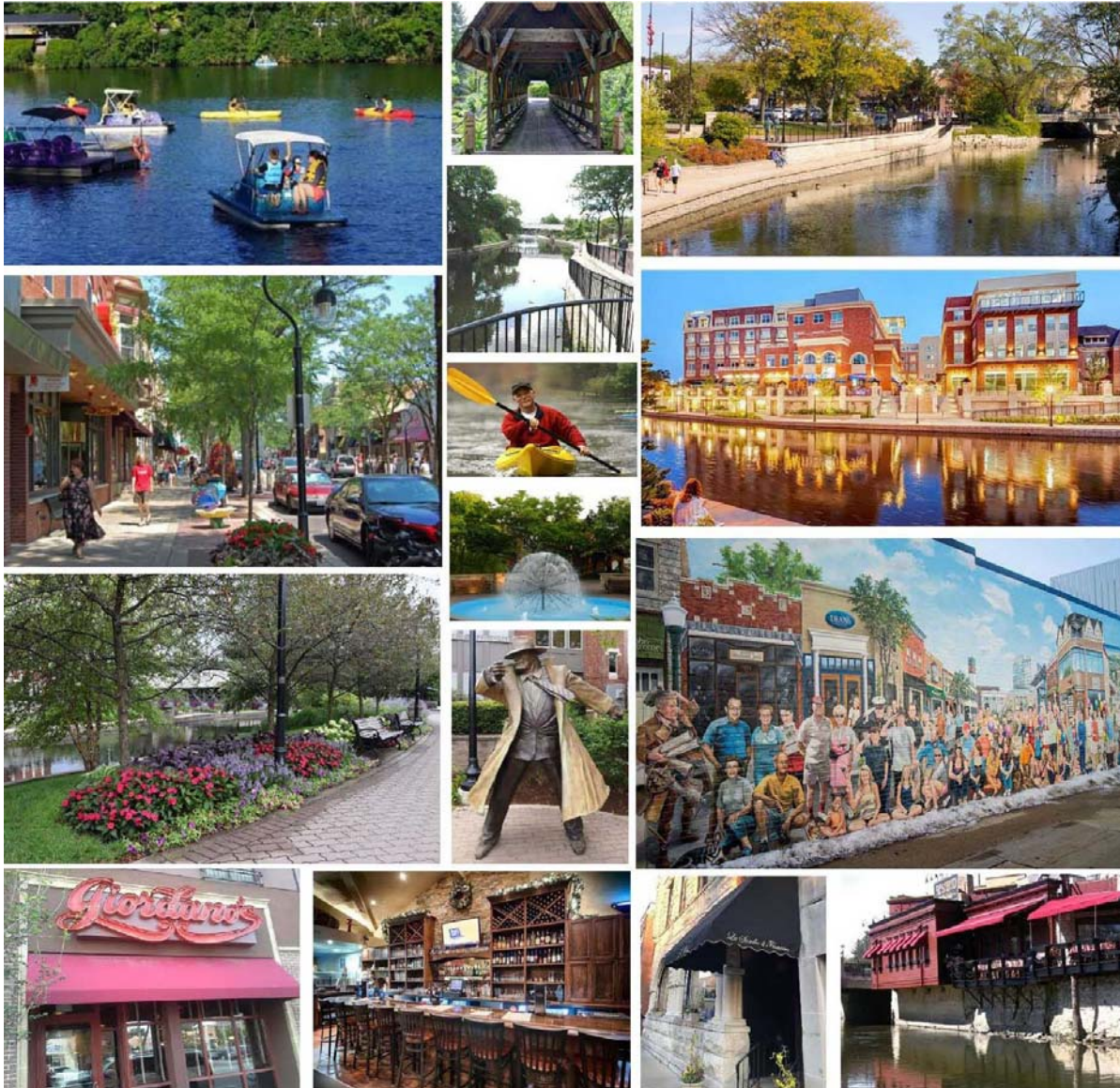
The Welcome Party is on Monday, September 11 at 6 PM. There will be food and drink available at the Welcome Party. The charge is only \$5. This is an opportunity to visit with old friends and make new ones. It is a way to get our National Specialty started off with a small party. Reservations are necessary because we have to turn in the count to the hotel so they know how much food to prepare.

## INFORMATION ABOUT THINGS TO DO IN THE AREA

### FUN AREA NEAR HOTEL - NAPERVILLE RIVER WALK

4 miles from Sheraton Lisle Naperville Hotel

Considered the "crown jewel" of Naperville, the Riverwalk is a place of beauty and tranquility along the West Branch of the DuPage River. It features 1.75 miles of brick paths, fountains, bridges, meeting and event places, outdoor sculpture and artwork and recreational facilities.



## THINGS TO DO NEAR NATIONALS HOTEL

Sheraton Lisle Naperville Hotel - 3000 Warrenville Road; Lisle, IL 60532

### Bowling

**Bowlero Naperville** (6.2 miles from hotel- 12-14 minutes)

1515 Aurora Ave Naperville, IL 60540

(630) 355-7622

<https://www.bowlero.com>

**Lisle Lanes** (2.6 miles from hotel- 4 minutes)

4920 Lincoln Ave Lisle, IL 60532

630-968-1300

<https://lislelanes.com/>

### Golf and Restaurant-

**Seven Bridges Golf Club** (4.6 miles – 8 minutes)

One Mulligan Drive; Woodridge, Illinois 60517 630-964-7777

<https://sevenbridgesgolfclub.com>

*Wonderful golf course and restaurant*

### Health Club

**Edward Health and Fitness Center** (5.2 miles – 11 minutes)

775 Brom Ct; Naperville, IL 60540 630-646-5900

[Health & Fitness | Edward-Elmhurst Health \(eehealth.org\)](http://eehealth.org)

*Great health club owned and operated by Edwards Hospital in Naperville.*

### Walking & Sightseeing

Naperville Riverwalk (4.8 miles – 10 minutes)

Downtown Naperville

<https://www.naperville.il.us/enjoy-naperville/naperville-riverwalk/>

*Quaint village with lots of sights to see and restaurants to try with plenty of shopping.*

**Morton Arboretum** (2.2 miles – 3 minutes)

4100 Illinois Route 53; Lisle, IL 60532

[The Morton Arboretum | To plant and protect trees for a greener, healthier, and more beautiful world](http://www.mortonarboretum.org)

*Beautiful garden and walking sight on 1,700 acres.*

**City of Batavia** (15.8 miles – 20 minutes)

This city has all kinds of museums etc and is just a short distance from the hotel

[https://www.tripadvisor.com/Attractions-g35654-Activities-Batavia\\_Illinois.html](https://www.tripadvisor.com/Attractions-g35654-Activities-Batavia_Illinois.html)

### Science

**Fermi Labs** (12.2 miles – 15 minutes)

Kirk Road and Pine Street; Batavia IL 60510-5011 630-840-3351

*Fermilab is America's particle physics and accelerator laboratory. They have tours and lots of interesting things to see.*

**American Science & Surplus Inc** (6.4 miles – 12 minutes)

33w361 Il Route 59; West Chicago, IL 60185 630-232-2882

<https://www.sciplus.com/>

*Has all kinds of science, outdoor and camping gear. Lots of interesting things.*



## **Outlet Mall**

**Chicago Premium Outlets** (10 miles – 12 minutes)

1650 Premium Outlet Blvd; Aurora, IL 60502-2901

<https://www.premiumoutlets.com/outlet/chicago>

*Great stores and good place to find discounted merchandise*

## **Arcades**

**Dave & Busters** (15.2 miles 21 minutes)

<https://www.daveandbusters.com>

1155 N. Swift Road; Addison, IL 60101

(630) 543-5151

Arcade games and food - Half price on Wednesdays

**Funway** (14.3 miles 19 minutes)

<https://funway.com/indoor-fun/arcade/>

1335 S. River St., Batavia, IL 60510

630-879-8717

Bumper Cars, Arcade games, Pinball machines, go carts

**Chicago's Navy Pier** (30 miles – 51 minutes)

<https://navypier.org/eat-drink-play/rides-and-games/>

All kinds of games and rides

600 E. Grand Ave. Chicago, IL. 60611

## **Movie Theaters**

**Studio Movie Grill** (Wheaton) (2 miles – 3 minutes)

Eat and watch a movie at the same time

301 Rice Lake Sq, Wheaton, IL 60189-2194

331 236 0728

<https://www.studiomoviegrill.com/locations/illinois/wheaton/2021/7/11>

**Cinemark Seven Bridges and IMAX** (4.7 miles- 9 minutes)

6500 Il-53, Woodridge, IL 60517

630 663 889

## **Candy Shoppe**

**Naperville Nuts and Sweets** (4.2 miles – 9 minutes)

10 W Jefferson Ave Naperville, IL 60540

(630) 355-5330

<https://www.napernutsandsweets.com/>

## **THINGS TO DO IN DOWNTOWN CHICAGO**

**Magnificent Mile** (29 miles- 30 minutes- 1 hour depending on traffic)

The Magnificent Mile is the 13-block stretch of North Michigan Avenue that runs from the banks of the Chicago River to the south, to Oak Street to the north. It contains shopping,

Dining, historical attractions and entertainment

## **Navy Pier ( Arcades)**

**Shedd Aquarium** (28.2 miles 30-60 minutes depending on traffic)

1200 S. Lake Shore Drive; Chicago, IL 60605

World class exhibits of fish from around the world;

**Willis (Sears) Tower** (27 miles 30-60 minutes depending on traffic)

233 South Wacker Drive; Chicago, IL 60606

The Skydeck in the Willis Tower is the highest observation deck in the United States. It is 1,353 feet and 103 stories up. The views from the observation deck are amazing after dark.

**Field Museum of Natural History** (28.2 miles 30-60 minutes depending on traffic)

1400 S Lake Shore Dr, Chicago, IL 60605

The largest Natural History Museum in the world